

# Flow Chart for NPDES Construction Permits and Supplemental Worksheets

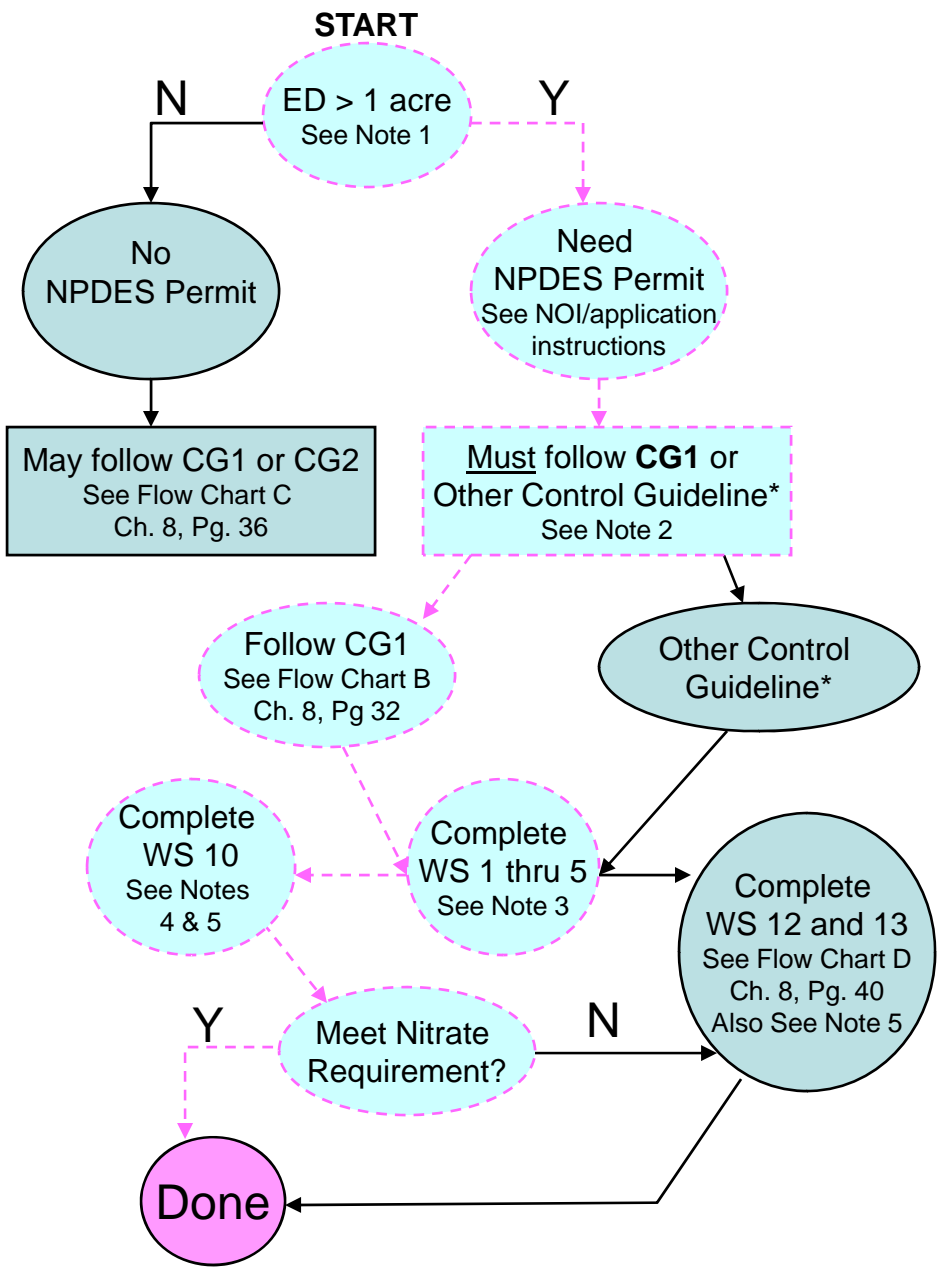
CG = Control Guideline  
 NOI = Notice of Intent  
 ED = Earth Disturbance  
 WS = Worksheet  
 - - - -> = Recommended Path

**Note 1:** Trigger for NPDES Permits is earth disturbance (ED). This includes redevelopment. See application instructions for more info, including a definition of ED.

**Note 5:** Only WS 1 - 5 are included in the NPDES Application. The rest of the WS can be found in Ch. 8 of the PA SWM BMP Manual.

If unable to meet Nitrate Req., additional WQ BMPs will be necessary. See *Water Quality Analysis* (8.6.3) and *Water Quality Calculations* (8.7.2) for more info.

WS 13, when required, needs to be completed for each BMP.



**Note 2:** Follow *Stormwater Calculation Process* (8.7.1) – disregard 8.7.1.2 for CG2.

\*Other Control Guideline must be acceptable to DEP/CD. It must meet the NPDES requirements and be consistent with the PA Comprehensive SWM Policy.

It may be based on a current and updated Act 167 Plan, Watershed Plan, Model Ordinance, or Local SWM Regulation.

Examples:

- Darby-Cobbs Act 167 Plan
- CCWRA Model Ordinance
- PWD SWM Regulations.

**Note 3:** WS 1 - 5 are required for all projects requiring an NPDES Permit.

See Flow Chart A – Ch. 8, Pg. 28. Replace “CG-2” with “Other CG”.

For WS 3, submit the “Criteria and Credits” Sheet for each non structural BMP (Ch. 8, pgs 18-26) to claim credit from volume reduction.

**Note 4:** WS 10 asks to complete 2 primary or 4 secondary BMPs to achieve nitrate compliance. In the absence of 2 primary BMPs, the applicant may select 1 primary BMP and 2 secondary BMPs.