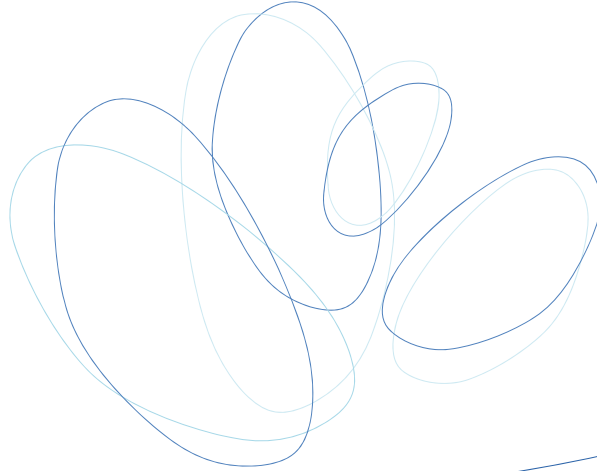
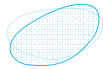


# P2/E2 Roundtable of PAEP

August 20, 2009



**sanofi pasteur**  
The water division of sanofi-sintelabo Group



## P2/E2 Roundtable of PAEP

August 20, 2009

### Agenda

8:30 – 9:00 a.m.	Registration
9:00 a.m.	Tour of New Wastewater Treatment Plant
9:45 a.m.	Tour of New Spray Irrigation Project
10:30 a.m.	Tour of Waste Handling/Recycling Area
11:15 a.m.	Sanofi Pasteur Overview
11:45 a.m.	Lunch
12:45 p.m.	Sanofi Pasteur Sustainability Initiatives
1:15 p.m.	Q and A
1:30 p.m.	Jan Warnick - American Reinvestment and Recovery Act programs/money/Recovery Efforts
2:00 p.m.	Committee meeting to discuss future events. Everyone is welcome to attend this meeting.

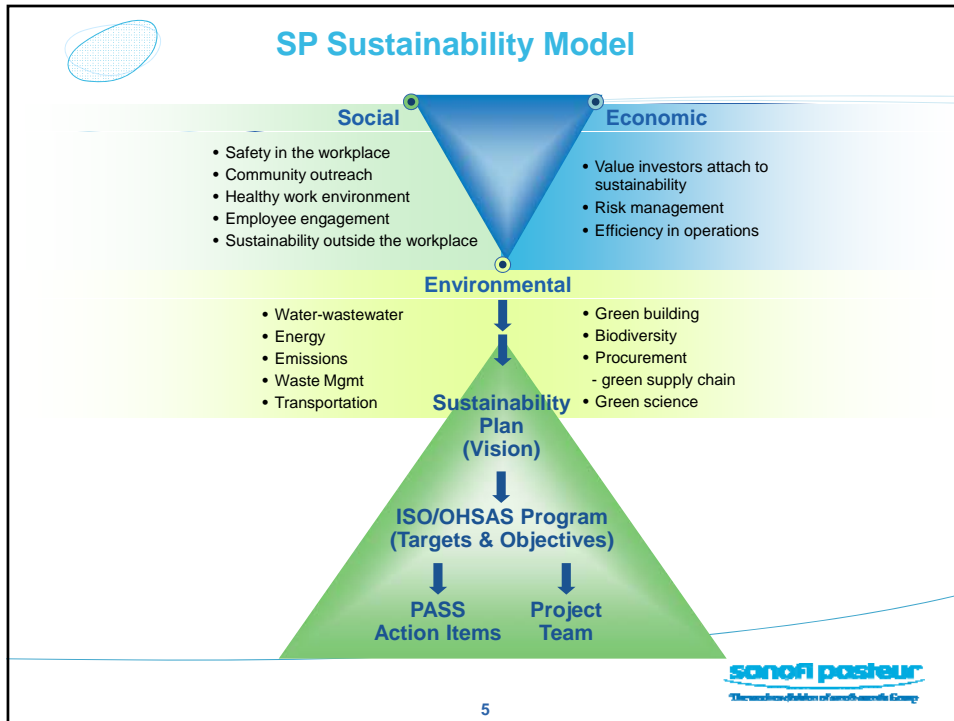
**sanofi pasteur**  
The water division of sanofi-sintelabo Group

## What is Sustainability at Swiftwater?

- A continuous improvement process to reduce the impact of our operations and minimize effects on resources and emissions

## Sustainability Value

- Aligned with ISO 14001
- Aligns with and reinforces our corporate vision image as a provider of health and well being
- Affects our ability to expand and compete



- ## Sustainability
- History of environmental stewardship
    - ▶ Wastewater treatment
    - ▶ Air pollution control
    - ▶ Waste reduction and recycling
    - ▶ Others
    - ▶ HSE centered
- sanofi pasteur**  
The vaccine division of sanofi-sintelabo Group
- 6

## Sustainability Team Approach

- ◆ Spread sustainability through teams
  - ▶ Target low hanging fruit
  - ▶ Projects should be easy to implement- important early wins
  - ▶ Visible to management
  - ▶ Employee engagement through participation and communication

## Five Sustainability Teams

- ◆ Formed 2008
  - ▶ Climate Change and Energy
  - ▶ Green Procurement
  - ▶ Green Chemistry
  - ▶ Water
  - ▶ Waste

## Sustainability Teams

- ▶ Selected leaders
- ▶ Solicited and developed members
- ▶ Broad based membership
  - ┆ Maintenance
  - ┆ Administration
  - ┆ Security
  - ┆ Engineering
  - ┆ Custodians
  - ┆ Food service
  - ┆ HSE

## Team Building and Execution

- ▶ Management support
  - ┆ individuals and projects
- ▶ Individual performance objectives
- ▶ Goals and objectives
- ▶ Identify metrics
- ▶ Measure performance
- ▶ Share and communicate results

## Team Objectives and Projects

## Climate Change and Energy

- Install lighting controls and energy conservation measures
- Reduce building and site lighting use by 40% (2009 end)
  - ▶ Projects
    - General lighting
    - Meters
    - Escalator operation
    - B 53 /55 lab lighting

## Climate Change and Energy Projects

- Steam and electric meter systems
- Boiler upgrades
- Improved fleet efficiency
- Electric vehicles
- Lighting upgrades
- Natural gas feasibility
- Parking lot photocells
- Building weatherproofing
- Car/vanpool growth
- Thermostat controls
- Optimize chillers
- Virtual server systems
- Green Roofs
- Utility system monitoring

## Green Procurement

- Identify and obtain green products and services. Identify two products or services and evaluate feasibility of green alternatives
  - ▶ 30% recycled paper (complete)
  - ▶ Purchase remanufactured printer cartridges
  - ▶ Incorporate green building principles for new buildings and renovations. Create GB guide by 2009 (end)

## Green Procurement Projects

- Green design guide
  - CFC replacements
  - 30% PC copy paper \*
  - E-pay stubs\*
  - Purchase recycled printer cartridges
  - 30% PC business cards and stationary
  - Green janitorial cleaners\*
  - No-mow zone 30%\*
- \* complete

## Green Chemistry Team

- Implement 12 principles of Green Chemistry on selected R&D and manufacturing processes and procedures
  - ▶ Replace radioimmunoassay with ELISA test by 2013 (end)

## Water Team

- Identify and develop projects that conserve water and protect water quality
  - ▶ Decrease storm water infiltration to sanitary sewer with manhole cover seals by 2009 (end)
  - ▶ Install water meters and gather use data
  - ▶ Set water use reduction targets by 2009 (end)

## Water Team Projects

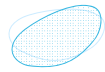
- Advanced flow metering
  - Manhole seals
  - Waste ethanol capture and recycling
  - ID storm sewers that drain to stream \*
  - Waterless urinals
- \*complete

## Waste Team

- Identify and support projects that reduce waste; zero landfill disposal of waste
  - ▶ 20 % reduction in land filling (compactor pulls) by 2009 ( 40 %, complete)
  - ▶ 10 % recycling rate increase by 2009 (15 %, complete)

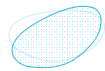
## Waste Team Projects

- Egg waste process
    - ▶ Anaerobic digestion
    - ▶ microwave
  - Waste study\*
  - Aerosol can recycling\*
  - Trash bag replacement\*
  - NRP (waste to energy)\*
  - Cafeteria biodiesel
  - Food composting
  - C&D recycling\*
  - Recycling training\*
  - Comingle recyclables
  - Stationary box reuse\*
  - Waste ethanol reclaiming
  - Polystyrene recycling
    - ▶ Coolers\*
    - ▶ Packing\*
- \* complete



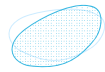
## Our experience

- Management support
  - ▶ HSE Policy
  - ▶ Support direction
  - ▶ Funding



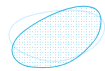
## Our experience

- Broad based teams
  - ▶ From all areas
  - ▶ Best ideas and success
  - ▶ Subject experts
  - ▶ Involved and committed



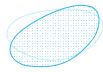
## Our experience

- Teams require time and resources
  - ▶ Volunteer
  - ▶ Meetings
  - ▶ Projects
  - ▶ Recognition
  - ▶ Member rotation



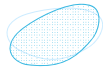
## Our experience

- Communications
  - ▶ Earth Day
  - ▶ Weekly Bulletin
  - ▶ TV monitors
  - ▶ Special articles
  - ▶ Intranet
  - ▶ others



## Our experience

- Continuous improvement
  - ▶ Never ends



## Questions

## Notes

- Recycle rates %
  - ▶ 2007 35
  - ▶ 2008 45
  - ▶ 2009 50
- Annual Savings \$
  - ▶ Aerosol 60K
  - ▶ Blue bags 45K
  - ▶ NRP 40K
  - » 145K